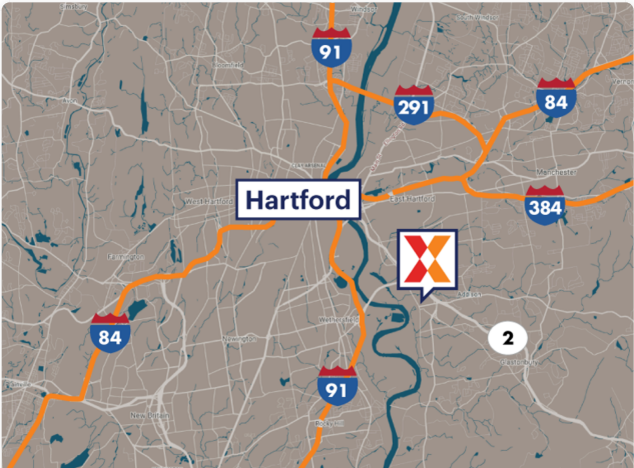
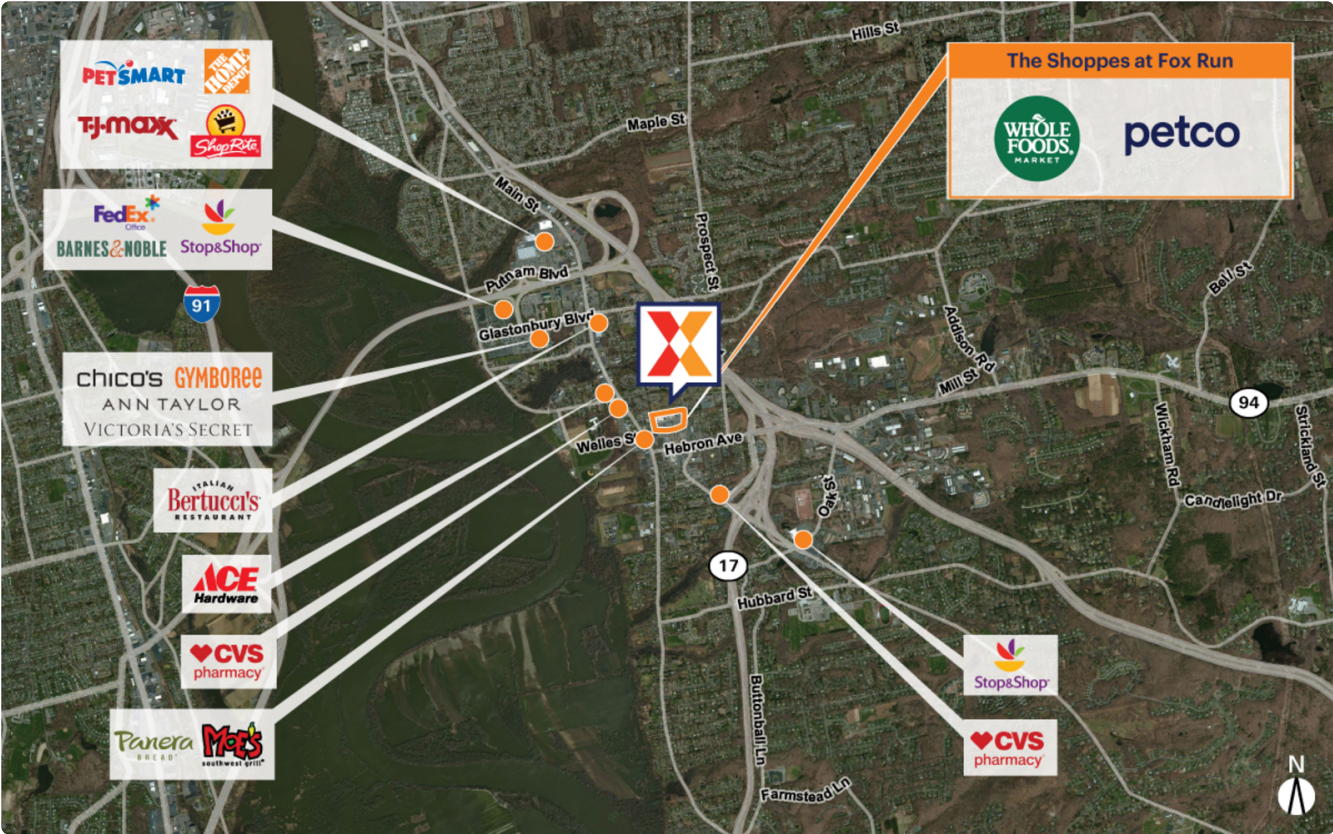


# The Shoppes at Fox Run

55 Welles Street | Glastonbury, CT 06033

41.7147, -72.6070

Capitol Planning Region    Hartford-West Hartford-East Hartford, CT    108,167 Sq Ft



Demographics	1 Mile	3 Miles	5 Miles
Population	6,217	42,293	164,302
Daytime Pop.	12,484	49,000	219,923
Households	2,921	17,729	65,975
Income	\$127,679	\$139,407	\$116,492

Source: Synergos Technologies, Inc. 2024

Whole Foods Market-anchored center with Petco and a significant health & wellness tenant presence, including Club Pilates, Stretch Lab, Beem Light Sauna and Orangetheory Fitness

High performing Whole Foods with almost 1M annual visits (Placer.ai) and estimated sales significantly exceeding the national average (TD Linx 2024)

Surrounded by an affluent & highly education trade area with an average household income of \$131,600 and 47% college-educated persons within 3 miles

A significant daytime population of 46,900 within 3 miles benefits from proximity to CT State Highway 2/Glastonbury Expressway with 77,000 vehicles daily (Kalibrate 2022)



